



*jordan fishwick*

6 Highfield Estate, Manchester Road, SK9  
Guide Price £479,950



## Highfield Estate Wilmslow SK9 2JR

Guide Price £479,950




Situated in a prime location on Manchester Road, just a short walk from Wilmslow Town Centre and The Carrs Park, this excellent three-bedroom semi-detached home offers spacious, well-planned accommodation and a fantastic blend of character and practicality – perfect for modern family living. The property is well positioned for easy access to the A34 and M56 providing easy access for commuting and Manchester Airport is only a short drive away. Renowned local schools are also within close proximity. The accommodation comprises in brief: A welcoming hallway with engineered oak wooden flooring and a recently upgraded front door providing access to both the living room and kitchen/diner. Into the living room - a bright and airy space featuring a gas fireplace with surround, carpeted flooring, a front-facing window, and French doors which open out onto the rear garden - ideal for entertaining. The kitchen area features tiled flooring, a range of base and eye level units, laminate worktops, a sink with mixer tap, gas hob, electric oven, extractor fan, and space for a dishwasher, washing machine, and under-counter fridge and freezer. The dining area boasts engineered oak flooring and a window to the front aspect. A rear door provides access to the well maintained garden. Up to the first floor landing - a bright, open landing area with potential for a home office, complete with large storage cupboard, rear-facing window, and carpeted flooring. Three well proportioned double bedrooms as well as a stylish and modern family bathroom which includes a shower over bath, vanity unit with basin, W.C, part tiled walls, and a privacy window. Spacious loft accessed via a pull-down ladder – ideal for storage or potential future conversion. Generous driveway with parking for multiple vehicles. Must View!





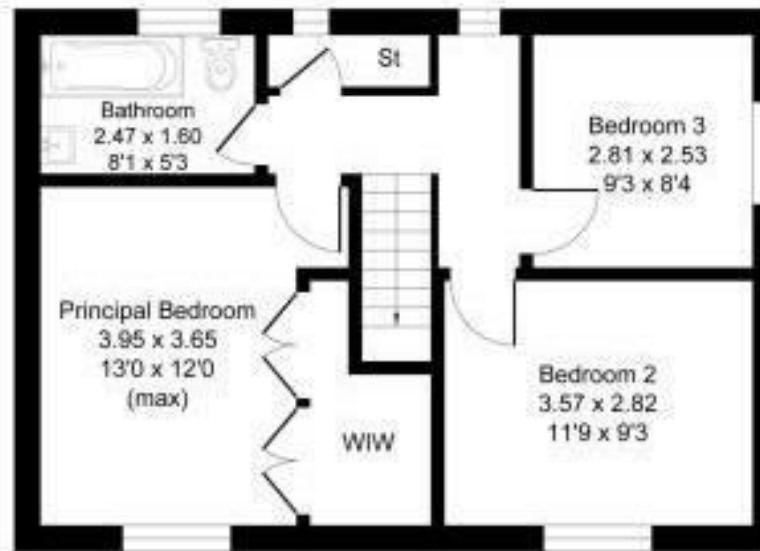
- Three Well Proportioned Double Bedrooms
- Generous Driveway - Off Road Parking
- Walking Distance To Amenities
- Well Maintained Private Garden

Energy Efficiency Rating		
	Current	Potential
Very energy efficient - lower running costs		
(92 plus) <b>A</b>		
(81-91) <b>B</b>		
(69-80) <b>C</b>		
(55-68) <b>D</b>		
(39-54) <b>E</b>		
(21-38) <b>F</b>		
(1-20) <b>G</b>		
Not energy efficient - higher running costs		
	<b>57</b>	<b>70</b>
<b>England &amp; Wales</b>		EU Directive 2002/91/EC 





Ground Floor



First Floor

Illustration for identification purposes only, measurements are approximate, not to scale.



These particulars are believed to be accurate but they are not guaranteed and do not form a contract. Neither Jordan Fishwick nor the vendor or lessor accept any responsibility in respect of these particulars, which are not intended to be statements or representations of fact and any intending purchaser or lessee must satisfy himself by inspection or otherwise as to the correctness of each of the statements contained in these particulars. Any floorplans on this brochure are for illustrative purposes only and are not necessarily to scale.

Offices at: Chorlton, Didsbury, Disley, Hale, Glossop, Macclesfield, Manchester Deansgate, Manchester Whitworth Street, New Mills, Sale, Wilmslow and Withington

36-38 Alderley Road, Wilmslow SK91JX  
**01625 532000**

wilmslow@jordanfishwick.co.uk  
 www.jordanfishwick.co.uk